

*Makamae II*  
*by Gentry*





*In 1987 Gentry Homes began construction on Soda Creek, part of 1032 acres of land purchased from the James Campbell Estate which is known today as the Ewa by Gentry master planned community. Thousands of families have benefited from Tom Gentry's vision to provide high quality homes to local families at an affordable price.*

*Thirty-four years have passed, and generations of Oahu families call Ewa by Gentry home. Makamae, a name meaning "most precious one," will be the last offering in our community. Our Kahu suggested this name as we complete our founder's mission and recognize the gravity of this occasion as precious indeed. How many marriages, births, celebrations, jobs, graduations, and all of life's other precious moments have blossomed in this area that was once sugar cane?*

*Makamae will offer the best in design and quality construction at a price considered competitive price in today's Hawaii. Energy efficient ratings that exceed local requirements will save homeowner's money every single month. Space allocated for the home office or the returning family member have been carefully planned into each home. We hope you enjoy our model homes and should you decide to make Makamae home, welcome to the neighborhood.*



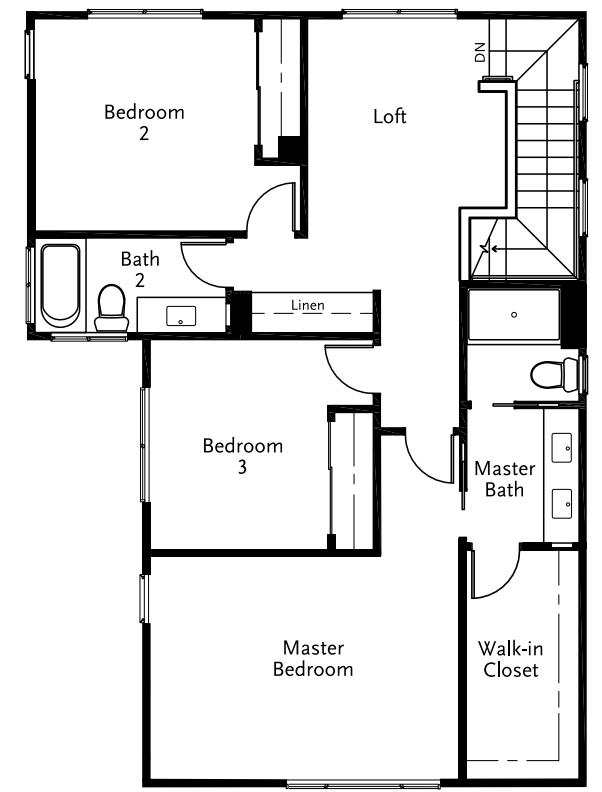
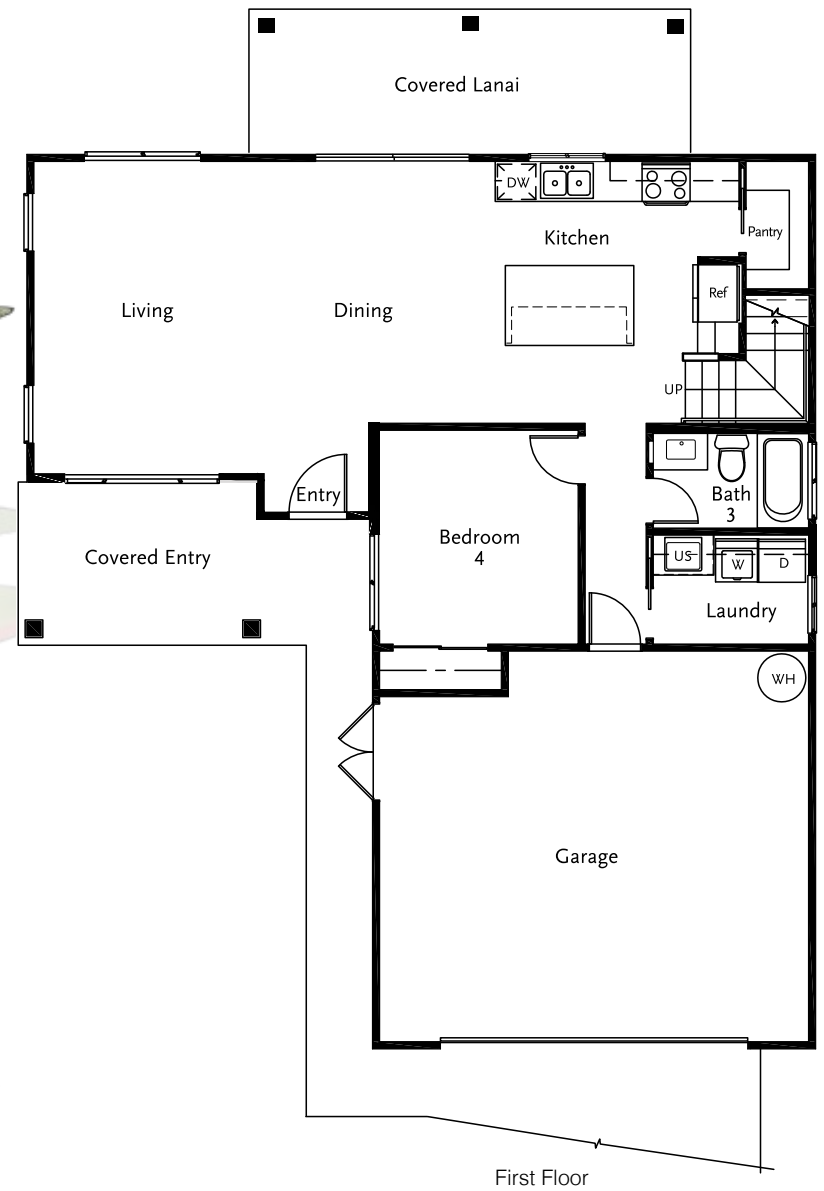


# Kaila

## PLAN 2

4 Bedroom, 3 Bath

First Floor	927 sq. ft.
Second Floor	1,029 sq. ft.
Total Living Area	1,956 sq. ft.
Covered Entry	132 sq. ft.
Garage	459 sq. ft.
Covered Lanai	154 sq. ft.



Second Floor

Rendering may be slightly altered. Square footages are approximate. Features may vary due to location and site conditions. Gentry reserves the right to make changes to design specifications and make material substitution without notice. These plans are copyrighted. Unauthorized copying or use of these plans is a willful infringement of Gentry Homes, Ltd.'s rights under copyright law and may result in a liability up to \$100,000 and attorney's fees and costs incurred to protect its rights.

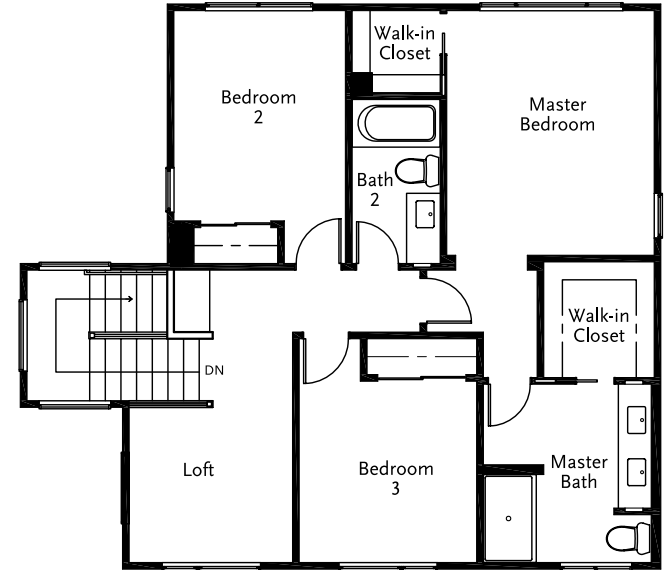
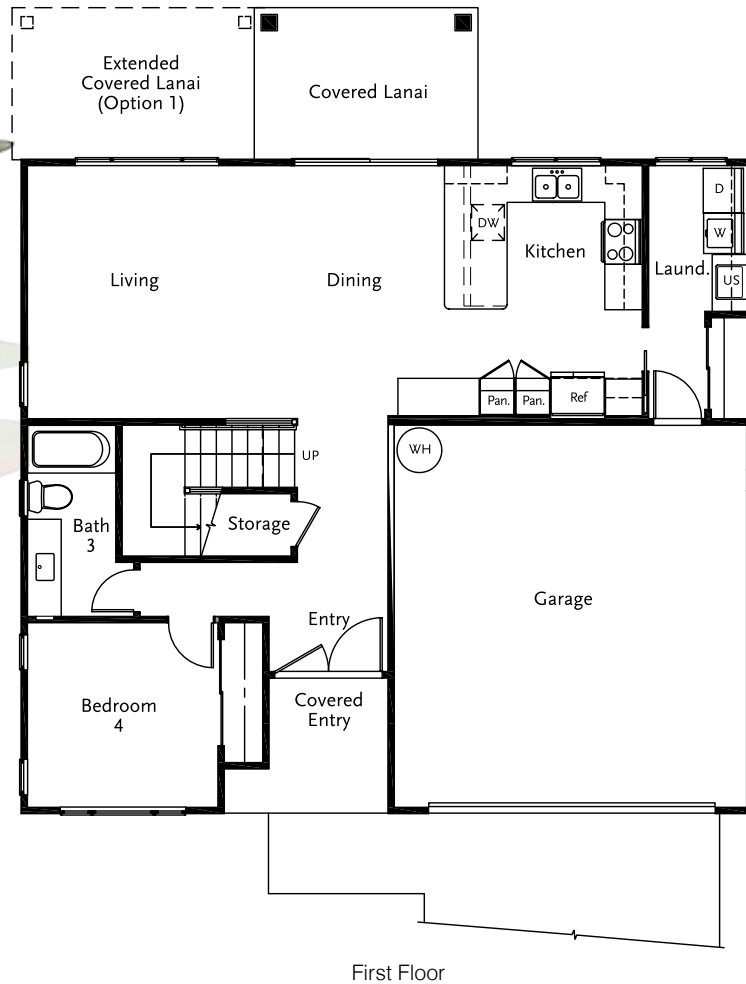


# Maluhia

## PLAN 3

4 Bedroom, 3 Bath

First Floor	998 sq. ft.
Second Floor	954 sq. ft.
Total Living Area	1,952 sq. ft.
Covered Entry	57 sq. ft.
Garage	440 sq. ft.
Covered Lanai	92 sq. ft.
Opt. 1 Extended Covered Lanai	200 sq. ft.



Second Floor

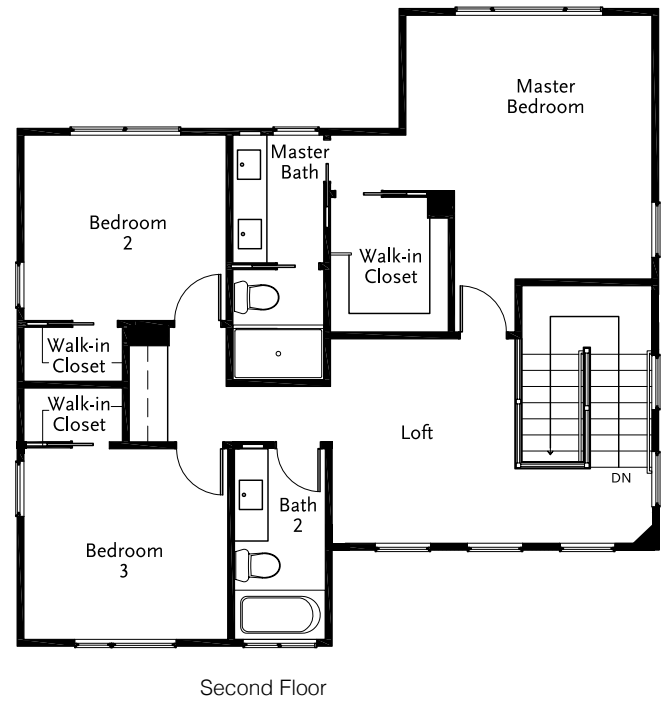


# Ailana

## PLAN 4

4 Bedroom, 3 Bath

First Floor	1,158 sq. ft.
Second Floor	970 sq. ft.
Total Living Area	2,128 sq. ft.
Covered Entry	30 sq. ft.
Garage	477 sq. ft.
Covered Lanai	65 sq. ft.
Opt.1 Extended Covered Lanai	168 sq. ft.



Rendering may be slightly altered. Square footages are approximate. Features may vary due to location and site conditions. Gentry reserves the right to make changes to design specifications and make material substitution without notice. These plans are copyrighted. Unauthorized copying or use of these plans is a willful infringement of Gentry Homes, Ltd.'s rights under copyright law and may result in a liability up to \$100,000 and attorney's fees and costs incurred to protect its rights.

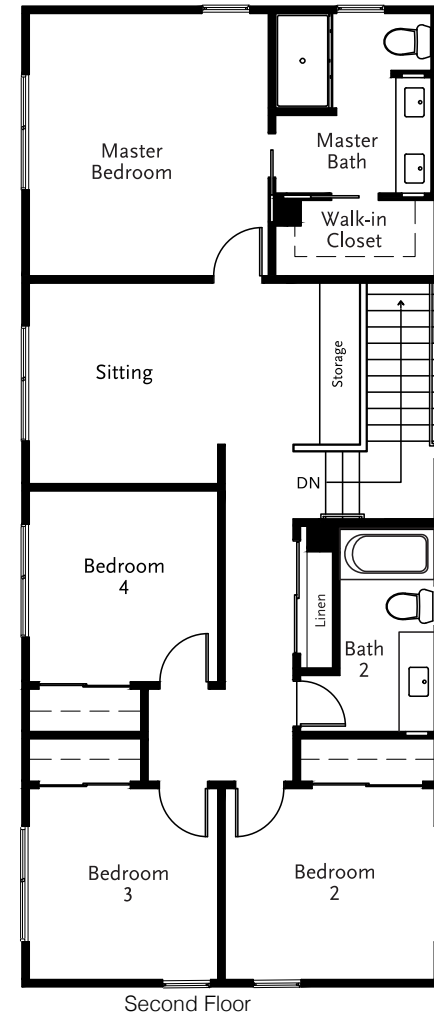
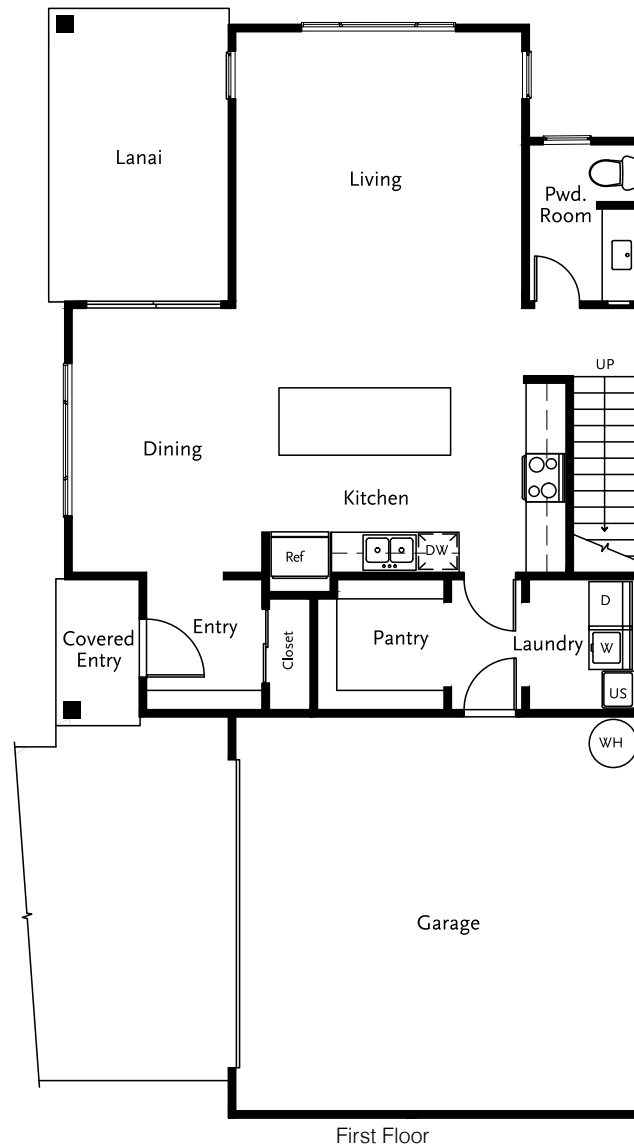


# Kukui

## PLAN 5R

4 Bedroom, 2.5 Bath

First Floor	897 sq. ft.
Second Floor	1,103 sq. ft.
Total Living Area	2,000 sq. ft.
Covered Entry	27 sq. ft.
Garage	452 sq. ft.
Covered Lanai	122 sq. ft.



# Features

## *Interior Appointments*

- 9' ceiling in all living & bedroom areas
- Raised panel interior doors with matte black hardware
- Wall to wall carpet
- Luxury vinyl plank in living, kitchen, bathrooms and laundry area
- Designer thermo-foil or laminate kitchen cabinets
- Corian kitchen counter top
- GE Profile Stainless steel appliance package:
  - Under mount kitchen sink
  - Ceramic top electric range with self cleaning oven
  - Microwave/hood combination vented to exterior
  - Dishwasher
- Provision for ice maker
- Disposal
- Spacious walk-in closet in master bedroom
- Dual vanities in master bathrooms
- Corian master shower surrounds with enclosure
- Mirrored sliding closet doors in selected plans
- Corian bathroom vanity tops with integral bowls
- Pre-wired for ceiling fan in living & all bedrooms
- USB outlets in bedroom and select living areas
- Category 6 telecommunication wiring throughout home
- Whole home surge protector
- Phone/computer jack in all bedrooms
- Structured media cabinet
- Free slide wire shelves in all bedrooms & closets
- Interior laundry room
- Utility sink
- Key-less touch screen deadbolt in garage

## *Exterior/ Structural Appointments*

- Composition shingle roofing with 30 year warranty
- Insulated roll up garage with 2 remotes and key pad entry
- Hardi siding with 30 year transferable warranty
- Covered front entry in all plans
- Fiber optic cable ready
- Borate-treated lumber with 30 year warranty
- Vinyl privacy fence and gate
- Contemporary front entry door with windows
- Covered lanai (except Plan 2)
- Seamless rain gutters
- Gravel edging
- Front yard landscaping

## *Energy Savings Features*

- Solar hot water system with 120 gallon tank
- 20-SEER air conditioning
- Dual pane Low E vinyl windows
- LED light package
- Open cell foam insulation for increased energy efficiency
- Digital thermostat with WIFI and mobile access

## *Optional Upgrades:*

- Extended covered lanai
- GE washer, dryer & refrigerator
- GE Café appliance package
- Ceiling fans
- Wireless security system



## GENTRY HOMES

### Our Vision

People building quality homes and communities for a better Hawaii.

### Our Mission

Provide value to our customers through:

- Innovative design and technology
- Quality construction
- Competitive pricing
- Superior customer attention

91-1819 Olali Street, (Lot 31)  
Ewa Beach, Hawaii 96706  
Open Tues - Sun 10 am to 5 pm  
Mon - 12 pm to 5 pm

PHONE: (808) 447-8425  
FAX: (808) 447-8429

[www.gentryhawaii.com](http://www.gentryhawaii.com)

